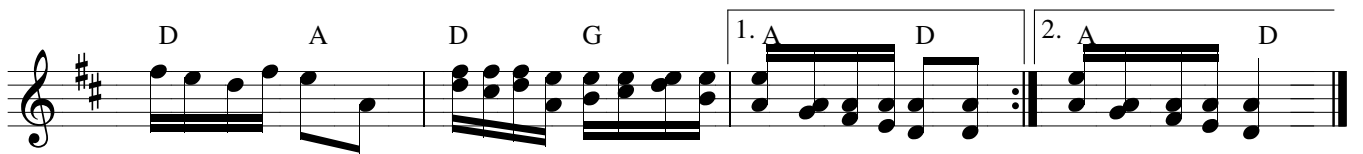
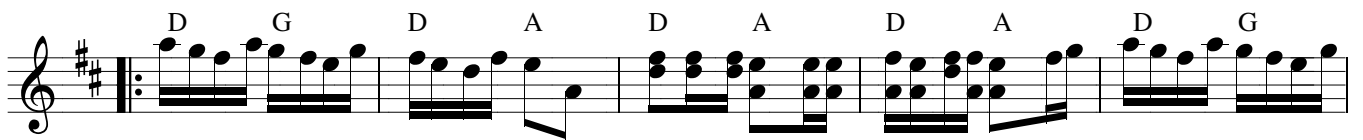


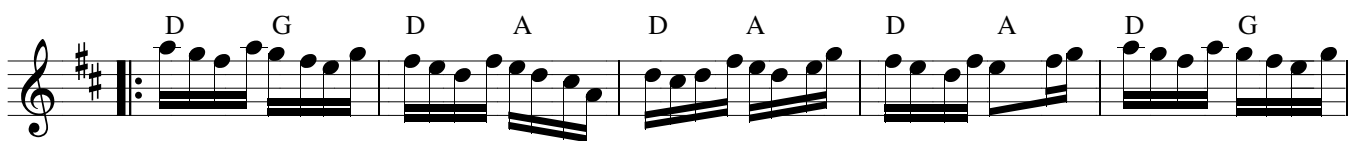
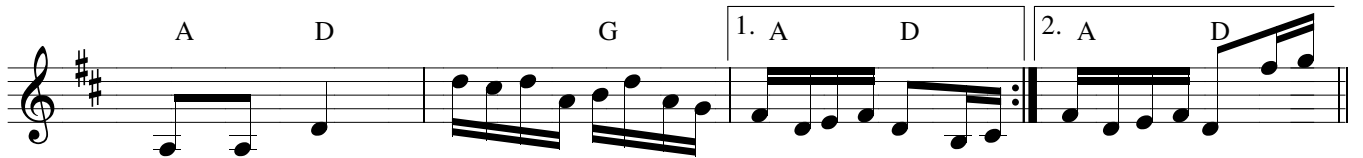
ARKANSAS TRAVELLER

fiddle

TRADITIONAL
Old-Time, Bluegrass



variant



variant

D G A D A

D G A D G 1. A D 2. A D

D G D A D G D A

D G D A D G 1. A D 2. A D

Detailed description: This system contains the first four staves of music. The first staff begins with a treble clef, a key signature of two sharps (F# and C#), and a common time signature. It features a sequence of notes and chords: D, G, A, D, A. The second staff continues with D, G, A, D, G, and includes first and second endings for the A and D notes. The third staff continues with D, G, D, A, D, G, D, A. The fourth staff continues with D, G, D, A, D, G, and includes first and second endings for the A and D notes.

variant

D G D A

D G D G 1. A D 2. A D

D G D A D A D A

D G D A D G 1. A D 2. A D

Detailed description: This system contains the next four staves of music. The fifth staff begins with a treble clef, a key signature of two sharps, and a common time signature. It features a sequence of notes and chords: D, G, D, A. The sixth staff continues with D, G, D, G, and includes first and second endings for the A and D notes. The seventh staff continues with D, G, D, A, D, A, D, A. The eighth staff continues with D, G, D, A, D, G, and includes first and second endings for the A and D notes.